

Schmidt TERA Abrasive Metering Valve

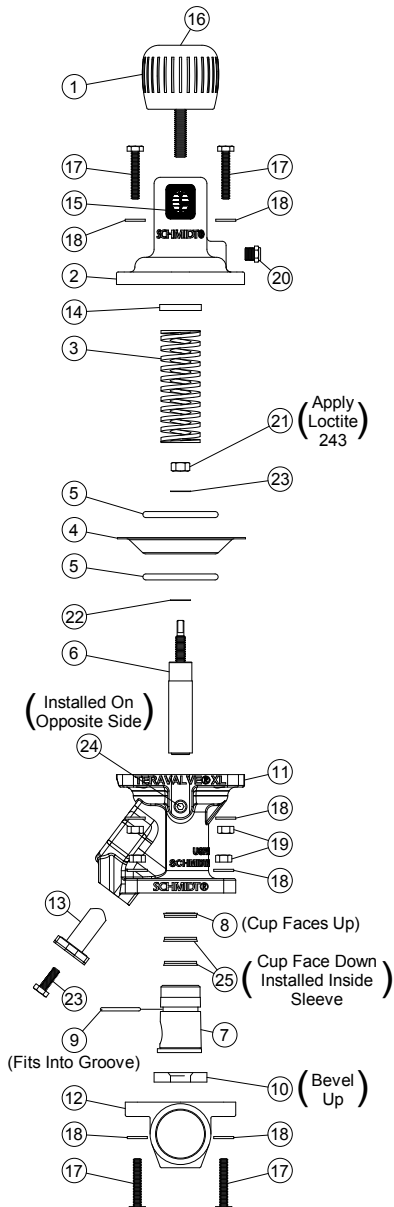


- Diaphragm-activated piston provides smoother action for improved valve life
- Rugged stainless steel body with XL technology for long service life
- 6" clearance makes it easy to convert automatic slowdown pots
- Requires minimum of 75 psi to use



Part Number	Description
GV 2130005	Teravalue XL 3/4"
GV 2130006	Teravalue XL 1"
GV 2130007	Teravalue XL 1 1/4"
GV 2130008	Teravalue XL 1 1/2"
GV 213000098	Replacement Parts Kit, Seals Only (†)
GV 213000099	Replacement Parts Kit (*)
GV 213020007	Teravalue Slotted Sleeve Option

5



Parts Breakdown

Part	Part Number
1 Knob	GV 213000001
2 Cap	GV 213000002
3* Spring	GV 213000003
4*† Diaphragm	GV 213000004
5 Diaphragm Plate	GV 213000005
6* Tungsten Carbide Plunger	GV 213000006
7* Tungsten Carbide Sleeve (Includes O-Ring & Internal Wipers)	GV 213000007
8*† Plunger Seal	GV 213000008
9*† Sleeve O-Ring	GV 213000009
10*† Seat (Color: Yellow)	GV 213000010
11 Body	GV 213000011
12a Base 3/4" x 3/4"	GV 213000512
12b Base 1" x 1 1/4"	GV 213000612
12c Base 1 1/4" x 1 1/4"	GV 213000712
12d Base 1 1/2" x 1 1/2"	GV 213000812
13 Cleanout Plug	GV 213000013
14 Vibration Disc	GV 213000015
15 Virtual Position Indicator Decal	GV 213000016
16 Knob Decal	GV 213000017
17 Hex Bolt, 1/4" UNC x 1 1/2" Lg.	GV 701050308
18 Flat Washer, 1/4" SAE	GV 702750202
19 Hex Nut, 1/4" UNC	GV 7017503
20 Breather Vent, 1/8"	GV 2014300
21 Hex Nut, 5/16" UNC	GV 7017505
22*† Gasket	GV 212300901
23 Hex Bolt, 1/4" UNC x 1/2" Lg.	GV 701050304
24 Plug, 1/8"	GV 3032100
25*† Plunger Seal (Remove O-Rings)	GV 213000008

* Included in Replacement Parts Kit
 † Included in Replacement Parts Kit, Seals Only