

POSITECTOR®

REPLICA TAPE READER (RTR)



APPLICATIONS

Digital spring micrometer measures and records peak to valley surface profile height using replica tape.

With the Universal Gauge Body accepts all PosiTector SPG, 6000, UTG and DPM probes.

FEATURES AND BENEFITS

SIMPLE

- Automatically subtracts the 50.8 µm (2 mil) incompressible film from all readings
- Minimizes inspector workload by reducing the number of replicas needed to ensure accuracy (see green inset below)

DURABLE

- Solvent, acid, oil, water and dust resistant—weatherproof
- Rugged indoor/outdoor instrument—ideal for field or shop use
- Shock-absorbing, protective rubber holster with belt clip

ACCURATE

- Produces a more accurate peak-to-valley height measurement (HL) (see green inset below)
- Conforms to national and international standards

VERSATILE

- PosiTector body accepts all PosiTector probes easily converting from a surface profile gage to a coating thickness gage, dew point meter, Shore hardness durometer, soluble salt tester or wall thickness gage
- High contrast reversible color LCD with backlit display
- Selectable display languages and measurement units
- Uses alkaline or rechargeable batteries (built-in charger)

POWERFUL

- Continually displays average, standard deviation, min/max and number of readings while measuring
- Every stored measurement is date and time stamped
- USB port for fast, simple connection to a PC/Mac and to supply continuous power

- Stored readings and images can be accessed using universal PC/Mac web browsers or file explorers. No software required.
- Includes PosiSoft suite of software for analyzing and reporting data

LINEARIZED PEAK HEIGHT MEASUREMENT (HL)

Coarse and X-Coarse replica tape share a 38–64 µm (1.5–2.5 mil) “overlap” region.

Measurements with analog micrometers require a complicated linearization procedure—averaging the two grades of replica tape to achieve reasonable accuracy.

With a single measurement, the PosiTector RTR produces a linearized peak-to-valley height measurement (HL), accurate over the full range of Coarse and X-Coarse tapes. There is no need to average two or more replicas.



ORDERING GUIDE

	Peak Height	Peak Height/Peak Density
Standard Model	RTRH1	RTRP1
Advanced Model	RTRH3	RTRP3
Probe Only	PRBRTRH	PRBRTRP

PEAK HEIGHT (H_L) SPECIFICATIONS

Range	20 – 115 µm (0.8–4.5mils)
Accuracy	±5 µm (±0.2 mils)
Resolution	1 µm (0.1 mil)

Conforms to ASTM D4417, ISO 8503-5, NACE RP287, SSPC-PA 17, SSPC-SP5, SP6, SP10, SP11-87T and others.

SELECT STANDARD OR ADVANCED FEATURES


STANDARD MODELS

Includes ALL features as shown on left plus...

- Storage of 250 readings—stored readings can be viewed or downloaded

ADVANCED MODELS

Includes ALL features as shown on left plus...

- Storage of 100,000 readings in up to 1,000 batches
- Live graphing of measurement data
- Batch annotation—add notes and change batch names with onscreen QWERTY keyboard
- WiFi technology wirelessly synchronizes with PosiSoft.net and downloads software updates
- Data transfer via USB to a PC or via  **Bluetooth** Wireless Technology to a mobile device, PC or printer

For a complete comparison of the Standard and Advanced features visit www.defelsko.com/rtr

POSITECTOR SMARTLINK™ COMPATIBLE

- Wirelessly connect PosiTector RTR-H probes to your smart device
- Turns your cell phone or tablet into a virtual PosiTector gage
- Includes Free mobile app

SELECT FROM 2 PROBE STYLES

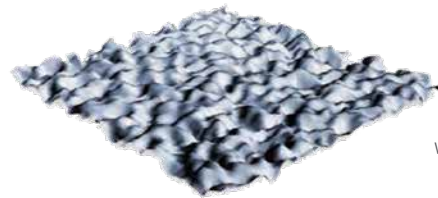
RTR-H

- Measures peak height (HL)

RTR-P

A surface cleaned by abrasive blast is best described using two measured parameters: **peak height** and **peak density**.

- Measures peak height (HL)
- Measures peak density (Pd)
- Generates images (Advanced model only)
 - black and white two dimensional (2D) and color three dimensional (3D) thumbnail images. Ideal for inclusion into reports and confirming consistent blasting results.
 - a high resolution SDF (surface data file) that can be imported into third-party rendering software. The result is a 3D map of the blasted steel surface at a cost far less than confocal or interferometric profiling devices.



POSITECTOR
WITH RTR-H PROBE

ALL GAGES COME COMPLETE with stainless steel burnishing tool, 5 cleaning cards, check shim(s), surface cleaning putty, protective rubber holster with belt clip, wrist strap, 3 AAA alkaline batteries, instructions, nylon carrying case with shoulder strap, protective lens shield, Long Form Certificate of Calibration traceable to PTB, USB cable, PosiSoft Software, two (2) year warranty on body and probe.