

OPEN FRONT BENCH BOOTHS



APPLICATIONS

Designed for both batch and conveyorized production systems, BlastOne's Open Front Bench Booth offers a safe and clean environment for any type of finishing operation. Airflow is drawn in through the open front, across the work area and exhausted through a filter bank in the back of the booth. The dry arrestor filters trap the airborne overspray particles before the filtered air is discharged through the exhaust system and into the atmosphere.

Conveyor pass-through openings can be as much as 25% of the booth open front area, without requiring additional exhaust fan capacity. Specially engineered enclosures may be designed to meet your requirements.

KEY FEATURES

HEAVY DUTY CONSTRUCTION

Booths are constructed from 18-gauge, prime quality galvanized steel and are engineered with corresponding support structure as booth dimensions demand. All panels and support members are precision punched for easy nut and bolt assembly.

INDUSTRY-LEADING LIGHTING

Booths receive bright, even illumination from four-tube, 48" long, 32 watt, fluorescent light fixtures. Col-Met light fixtures are ETL listed (Class 1 Division 2, Group A, B, C, D and Class 2 division 2, Group F and G.) and are supplied with a multi-voltage ballast to accept any voltage between 110vac and 277vac. Bulb are preinstalled at the factory and tested prior to shipment.

EFFICIENT FANS & MOTORS

Quality brand-name tubeaxial fans and motors

AIR SOLENOID VALVE

Interlocked to the exhaust fan and air supply for the spray application equipment

MEETS QUALITY PERFORMANCE STANDARDS

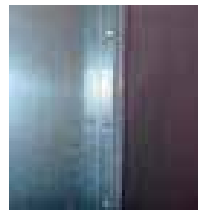
Spray booths manufactured by BlastOne meet and/or exceed all applicable OSHA and NFPA regulations.



UL & ETL LISTED CONTROL PANEL



AIR SOLENOID VALVE



5/16" BOLTS WITH SERRATED LOCK NUT



INDUSTRY-LEADING LIGHT LEVELS

OPTIONS

- LED lighting
- Air replacement units and intake chambers can be added
- 2-Stage filtration, 3-stage filtration, NESHAP filtration
- Reduced air flows for automatic spray operations
- Durable powder coated white option available
- Control panel and other electrical components can be purchased separately
- Exhaust ductwork

SELECTING A BOOTH SIZE

BlastOne can design and build spray booths in a variety of sizes and configurations. Although our team can engineer a custom booth to fit your needs, below are standard sizes that are quickly available to you.

MODEL NUMBER	INTERIOR DIMENSIONS			EXTERIOR DIMENSIONS			QTY. LIGHTS	QTY. FILTERS	FAN DIAMETER	FAN HP	SCFM @ 1/2" SP	SHIPPING WEIGHT
	WIDTH	HEIGHT	LENGTH	WIDTH	HEIGHT	LENGTH						
IBB-04-07-02-00-S	4'-0"	4'-0"	2'-0"	4'-4"	7'-2"	4'-2"	0*	4	18"	.75HP	2,000	675
IBB-05-07-03-00-S	5'-0"	4'-0"	3'-0"	5'-4"	7'-2"	5'-2"	1	4	18"	.75HP	2,500	940
IBB-06-07-03-00-S	6'-0"	4'-0"	3'-0"	6'-4"	7'-2"	5'-2"	1	6	18"	.75HP	3,000	1,240
IBB-08-07-03-00-S	8'-0"	4'-0"	3'-0"	8'-4"	7'-2"	5'-2"	1	8	18"	1HP	4,000	1,630
IBB-10-07-03-00-S	10'-0"	4'-0"	3'-0"	10'-4"	7'-2"	5'-2"	2	10	18"	1.5HP	5,000	1,870
IBB-12-07-03-00-S	12'-0"	4'-0"	3'-0"	12'-4"	7'-2"	5'-8"	2	12	24"	1.5HP	6,000	2,450
Ref. Key	A	B	C	D								

*Optional 36", two-tube light fixture available.

