

# HEAVY DUTY STRAPPING

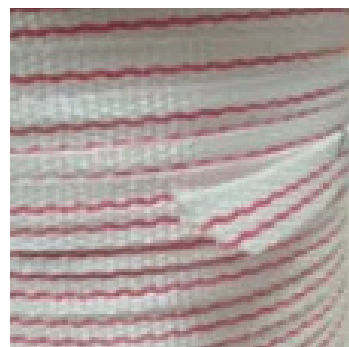
## APPLICATIONS

Woven polyester cord strapping is designed specifically for load containment applications. The 3/4" woven polyester cord strapping is great for regular duty load containment applications. This woven cord has a 2400lb. break strength and is proven to reduce product damage.



## FEATURES

- Fire Retardant option available
- Excellent shock resistance
- Won't scratch or damage surfaces
- Use buckles and tools for heavy-duty application
- Used to secure lumber, scaffolding, piping, building materials
- Used for bundling & packaging materials
- Used for shrink wrapping, roof, support structure, containments



Red stripe indicates FR Strapping

### ITEM SPECIFICATIONS

Part Number	Size	Color	Core	Additive	Qty	Average Weight
PCSTR34HD	3/4" x 1500'	White	3" x 5.75"-6"	N/A	2 rolls per case	22 lbs
PCSTR34HDFR	3/4" x 1500'	White & Red	3" x 5.75"-6"	Flame Retardant	2 rolls per case	22 lbs